

How to protect Personal Devices

In addition to work data, you should also consider what you are doing to protect your personal data at home. For your mobile device, you should ensure that you are backing up to your computer or the cloud. For your personal computer, having a backup method can greatly assist in the event of a home emergency. There are many cloud backup services which you can choose from. The below table is a subset of what is available and are not specific recommendations; you should review the info and make a choice based on your personal preferences and needs:

Service	Free Storage	Typical Plan Storage	Lowest Annual Cost
iDrive	5GB	1,000GB	\$52 (1st year)
SugarSync	None	100GB	\$90
Google Drive	15GB	15GB	\$24
JustCloud	1GB	75GB	\$60
iCloud	5GB	50GB	\$12
OneDrive	5GB	50GB	\$24
pCloud	20GB	500GB	\$60

**All have mobile apps and can be used on multiple devices.*

About Us

The Information Technologies & Services (ITS) department provides comprehensive IT infrastructure and service to support education, research, and clinical care. Please contact us for IT assistance:

Phone Support

212-746-4878

Monday-Friday from 7 am - 7 pm

Walk-In Support

SMARTDesk@1300

1300 York Avenue

Mon-Fri from 9 am - 6 pm

Saturdays from 10 am - 6 pm

Sundays from 12 pm - 8 pm

SMARTDesk@575

575 Lexington Avenue, 3rd Floor

Mon-Fri from 9 am - 5 pm

Online Support

support@med.cornell.edu or

myhelpdesk.med.cornell.edu

Send tickets & questions 24/7

Website

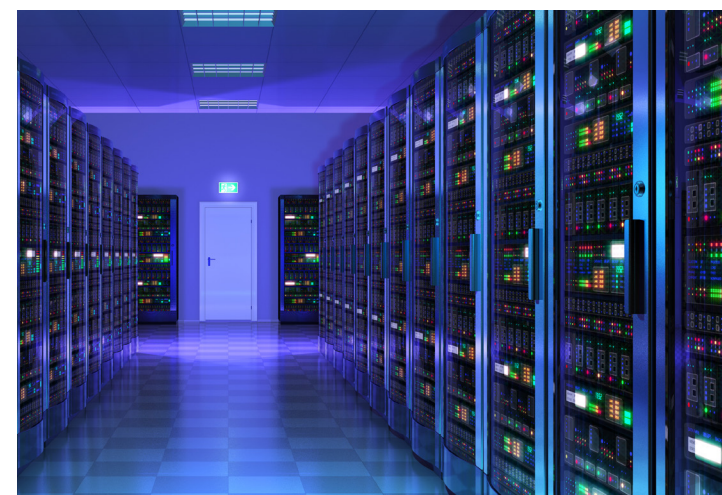
its.weill.cornell.edu



Subscribe to "WCM
Information Technologies &
Services"



Weill Cornell Medicine



Protect Your Data

**Protect your data to be prepared
in the event of a disaster**

Created by ITS Disaster Recovery

its.weill.cornell.edu

Are you protected?

Is your data centrally stored and encrypted, so it's safe during an event that significantly impacts technology?

ITS works with departments to help them to determine which services support their business functions and how they may be able to continue these processes in the event of a disaster. Therefore, some of the services you are utilizing may already be protected.

This brochure contains information on various services that can protect and back up your data. If you are interested in having the Disaster Recovery (DR) team coordinate an assessment of your protection abilities, please contact:

Larry Heck:

lah2014@med.cornell.edu

Lisana Gabriel:

lig2027@med.cornell.edu



Available Services

Data Storage

Virtual Desktop (VDI) users have their data available from any location once logged into their session. The backup and retention of data depends on your department's specific request and your VDI.

ITS offers various services for cloud data storage:

- **Box:** good for moderate-risk data*
Available at box.weill.cornell.edu
- **SharePoint:** good for high-risk data
Request from Service Desk (under "About Us")
- **File Share:** good for high-risk data
Request from Service Desk (under "About Us")

Data Transfer

If you need to transfer data that contains personally identifiable information (PII), sending an email with **#encrypt** in the subject line will encrypt both the attachments and the message text. Use transfer.med.cornell.edu to transfer larger files (attachment only encrypted).

Mobile

All tagged devices fall under ITS password policies, and can be remotely wiped if lost. However, you are still responsible for backing up your mobile device.

*Data classifications are available at its.weill.cornell.edu under **Policies > 11.03 - Data Classification > Section 1**.